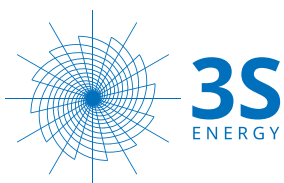




3S GENERAL PRODUCTS & SERVICES

Lighting - Batteries - Pumping systems -
Photovoltaic panels



STRATEGIC SOURCING SOLUTION LTD
Certificate No 63802944-000-09-16-8

Strategic Sourcing Solution LTD

Our aim is to provide the best services and products.

We take quality very seriously and we have an internal quality insurance program and also an external one which is controlled regularly by national and international bodies. We have implemented a full range of quality insurance standards ISO 9001, ISO 14001 , OHSAS 18001.

3S energy Table of contents



Lighting

04



Batteries

16



Pumping systems

36



Photovoltaic panels

50

3S energy Lighting

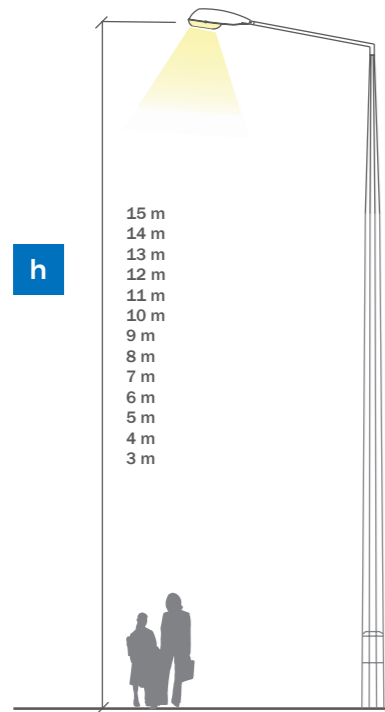


Orpheus LED II Range, LED luminaires for perimeter and street lighting



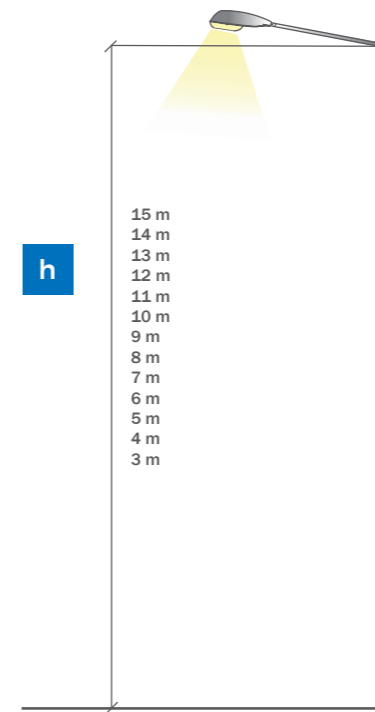
Features

- T4, STR, DWC2 asymmetric optics
- Adjustable arm, 60mm internal diameter
- Silicone lenses with pressure release channel
- LED, IP65
- Colour temperature (Tc): 5000K (4000K, 3000K)
- Colour rendering index (CRI): 70 (80,90)
- Interchangeable lenses
- Aluminium casing and radiator
- In line with Zhaga standard
- Ambient temperature range: -25°C to 45°C
- Colour: grey
- 230V – 50Hz, consumption 40W, 70W, 120W
- Driver with overvoltage, overheat, over-load and short circuit protection
- Upon request, may be equipped with smart drivers with AstroDIM or DALI dimming modes / pre-set to be equipped with smart dimming and control components
- Power factor local compensation >0.96
- Mounted on arm, adjustable
- L= 300mm to 700mm (according to model) * l=176mm *
h=125mm
- 4kg to 7kg (depending on model)



Monoblock octagonal pillars

1. Designed according to EN 1461 standard;
2. On request they can be painted in electrostatic field;
3. Pillars with a height of up to 12 m are made of one piece; The largest that have 12m are made of modules;
4. The size of the flange is a function of the height of the pillar;
5. Supports up to 4 arms, different shapes and sizes, made upon request.

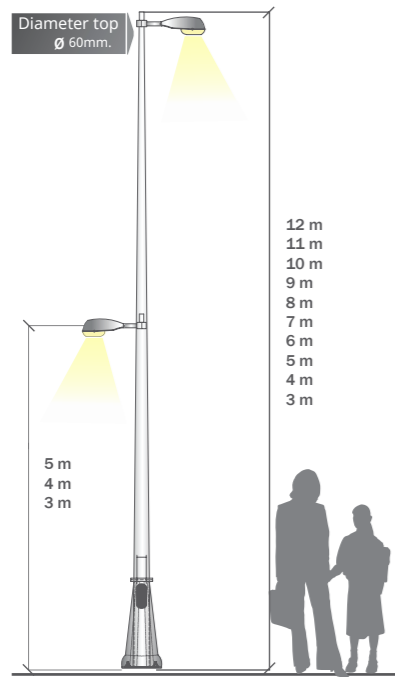


Octagonal pillars with detachable arms

1. Designed according to EN 1461 standard;
2. On request they can be painted in electrostatic field;
3. The corresponding arm of the pillar is attached; The largest that have 12m are made of modules;
4. The size of the flange is a function of the height of the pillar;
5. Supports up to 4 arms, different shapes and sizes, made upon request.

Specifications						Flange	Nuts and bolts	Foundation	Task			
Height (m)	Section 1	Section 2	Size top (mm)	Size bottom (mm)	Thick-ness	Sizes (mm)	Pieces type (mm)	Lenght	Sizes (mm) - PO=1	Vertical task (N)	Wind speed (km/h)	
2,5	8	-	60	105	3	220x220x8	4-M12	432	400x400x600	1	618,5	130
3,5	8	-	60	105	3	220x220x8	4-M12	432	400x400x600	1	618,5	130
4,5	8	-	60	105	3	220x250x10	4-M16	500	500x500x600	1	691,95	130
5,5	8	-	60	105	3	250x250x10	4-M16	500	500x500x600	1	691,95	130
6,5	8	-	60	125	3	250x250x10	4-M16	500	600x600x600	1	871,25	130
7,5	8	-	60	138	3	250x250x10	4-M16	500	700x700x600	1	871,25	130
8,5	8	-	60	155	3	300x300x12	4-M16	500	800x800x700	1	969,25	130
9,5	8	-	60	161	3	300x300x2	4-M16	500	800x800x800	1	969,25	130
10,5	8	-	60	200	3	400x400x14	4-M20	600	800x800x800	1	527,8	130
11,5	8	-	60	220	3	400x400x14	4-M20	600	800x800x800	1	969,25	130
12,5	8	-	60	245	3	400x400x14	4-M20	600	1000x1000x1000	1	969,25	130
14,5	8	-	60	245	3	400x400x14	4-M20	600	1000x1000x1000	1	969,25	130

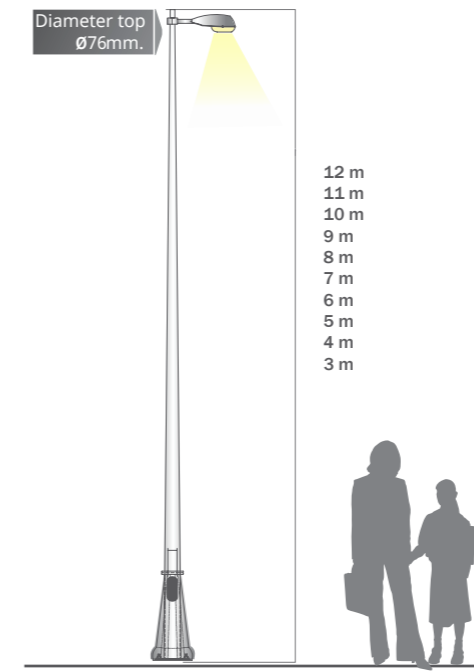
Specifications						Flange	Nuts and bolts	Foundation	Task			
Height (m)	Section 1	Section 2	Size top (mm)	Size bottom (mm)	Thick-ness	Sizes (mm)	Pieces type (mm)	Lenght	Sizes (mm) - PO=1	Vertical task (N)	Wind speed (km/h)	
3	8	-	60	105	3	220x220x8	4-M12	432	400x400x600	1	618,5	130
4	8	-	60	105	3	220x220x8	4-M12	432	400x400x600	1	618,5	130
5	8	-	60	125	3	220x250x12	4-M12	432	500x500x600	1	691,95	145
6	8	-	60	140	3	250x25x10	4-M16	576	500x500x600	1	691,95	145
7	8	-	60	170	3	280x280x12	4-M16	576	600x600x600	1	871,25	145
8	8	-	60	180	3	300x300x14	4-M16	576	700x700x600	1	871,25	145
9	8	-	60	205	3	300x300x16	4-M20	720	800x800x700	1	969,25	145
10	8	-	60	220	3	400x400x16	4-M20	720	800x800x800	1	969,25	145
11	8	-	60	235	3	420x420x16	4-M20	720	800x800x800	1	527,8	145
12	8	-	60	250	3	420x420x16	4-M20	720	800x800x800	1	969,25	145
13	8	-	60	225	3	400x400x18	4-M24	864	1000x1000x1000	1	969,25	145
14	8	-	60	240	3	400x400x18	4-M24	864	1000x1000x1000	1	969,25	145
15	8	-	60	250	3	400x400x18	4-M24	864	1000x1000x1000	1	969,25	145



Conical pillars with flange, circular section

1. Designed according to EN 1461 standard;
2. On request they can be painted in electrostatic field;
3. The size of the flange is a function of the height of the pillar;
4. Supports up to 4 arms, different shapes and sizes, made upon request.

Specifications				Flange		Nuts and bolts		Foundation		Task		
Height (m)	Section 1	Section 2	Size top (mm)	Size bottom (mm)	Thickness	Sizes (mm)	Pieces type (mm)	Length	Sizes (mm) - PO=1	Vertical task (N)	Wind speed (km/h)	
3	-	0	60	90	3	220x220x8	4-M12	432	400x400x600	1	618,5	120
4	-	0	60	100	3	220x220x8	4-M12	432	400x400x600	1	618,5	120
5	-	0	60	110	3	220x250x10	4-M12	432	500x500x600	1	691,95	130
6	-	0	60	120	3	250x250x10	4-M16	500	500x500x600	1	691,95	130
7	-	0	60	130	3	250x250x10	4-M16	500	600x600x600	1	871,25	130
8	-	0	60	140	3	350x350x10	4-M16	500	700x700x600	1	871,25	130
9	-	0	60	150	3	350x350x12	4-M16	500	800x800x700	1	969,25	130
10	-	0	60	160	3	350x350x12	4-M16	500	800x800x800	1	969,25	130
11	-	0	60	170	3	360x360x16	4-M20	600	800x800x800	1	527,8	120
12	-	0	60	180	3	360x360x16	4-M20	600	800x800x800	1	969,25	120



Conical pillars with flange, circular section

1. Designed according to EN 1461 standard;
2. On request they can be painted in electrostatic field;
3. The size of the flange is a function of the height of the pillar;
4. Supports up to 4 arms, different shapes and sizes, made upon request.

Specifications				Flange		Nuts and bolts		Foundation		Task		
Height (m)	Section 1	Section 2	Size top (mm)	Size bottom (mm)	Thickness	Sizes (mm)	Pieces type (mm)	Length	Sizes (mm) - PO=1	Vertical task (N)	Wind speed (km/h)	
3	-	0	76	105	3	220x220x8	4-M12	432	400x400x600	1	618,5	130
4	-	0	76	116	3	220x220x8	4-M12	432	400x400x600	1	618,5	130
5	-	0	76	126	3	220x220x10	4-M16	500	500x500x600	1	691,95	145
6	-	0	76	136	3	250x250x10	4-M16	500	500x500x600	1	691,95	145
7	-	0	76	146	3	260x260x12	4-M16	500	600x600x600	1	871,25	145
8	-	0	76	156	3	350x350x12	4-M16	500	700x700x600	1	871,25	145
9	-	0	76	166	3	350x350x12	4-M16	500	800x800x700	1	969,25	145
10	-	0	76	176	3	350x350x16	4-M16	500	800x800x800	1	969,25	145
11	-	0	76	186	3	400x400x14	4-M20	500	800x800x800	1	527,8	145
12	-	0	76	196	3	400x400x14	4-M20	500	800x800x800	1	969,25	145

3S Maxima

- » Auto battery charged with low water consumption electrolyte, maintenance-free
- » 24 months warranty
- » Expected life of 4 to 5 years



Technology

The MAXIMA battery is an excellent solution which includes a lot of innovations in the same product.

They are made with advanced technology, sealed and equipped with a safety system that meets three functions:

1. Personal labyrinth for every cell for preventing acid leakage
2. Centralized gas emissions filter provided with a single point of emission
3. Anti-blast filter that prevents the inside gas explosions and protects the motor compartment from the explosive gases

The MAXIMA batteries are built with Calcium-Calcium technology for both the negative and positive plate. This technology limits the auto-discharging for both the storage time as well as when the vehicle is not in use for a long time. The limited consumption of water allows for a maintenance free life-time.

Constructive Characteristics

- » Polypropylene-Copolymer Tanks (PPCo),
- » Handle for easy handling
- » Grates for negative and positive plates of lead-calcium alloy, expanded metal
- » Very reduced gauzes and therefore increased energy density with Up to 16%

- » Caps with special stoppers that allow recombination of the gases released during operation
- » Separators of polyethylene type "handbag"
- » Gauge dimensions according to SR EN 60095-2 + A11: 2000;
- » Functional characteristics according to SR-EN 50342-1: 2006, EN 50342-2: 2008
- » Anti-explosion filter
- » Also available in inverted terminals (Terminal + on left)
- » Charging indicator: type " magic eye"

Technical and functional advantages

- » "PbCa Expanded-metal" technology ensures very low water loss, below 1g / AH, guarantees lifetime maintenance free - under normal operating conditions
- » They can be stored in normal conditions, without recharging for a period of minimum 6 months
- » Due to the type-gauge characteristics and excellent parameters MAXIMA batteries covers all the necessary powers for auto-vehicles
- » **Viability and Security.** MAXIMA batteries are catalogued SPC (Safety Power Check) and they have a secured lid. The centralized gas system is optimized that allows the gas condensation in order for them to return to the battery. The presence of the safety valve in the lid eliminates risk of sparks and flames.

Nr.	Battery Type		Start-up current (-18 C) SR EN	Sizes			Weight with electrolyte (+/- 5%) Kg	Applications on vehicles
	Tens. (V)	Cap.C20 (Ah)		A	L (mm)	I (mm)		
1	12	55	510	207	175	190	12.7	Petrol car 2000 cm3
2	12	65	600	242	175	190	14.9	Petrol car 2500 cm3, Diesel car 1900cm3
3	12	80	720	278	175	190	18,3	Petrol car 4000 cm3, Diesel car 2500cm3
4	12	100	850	353	175	190	23,5	Petrol car 4200 cm3, Diesel car 3500cm3
5	12	110	950	396	175	190	26	Petrol car 5000 cm3, Diesel car 4000cm3

3S Fortza

- » Auto Battery – “ Sealed – Maintenance free”
- » 24 months warranty



Technology

FORTZA Batteries are made with advanced technologies, sealed and equipped with a safety system.

- » Double lid system which insures the complete seal of the battery capable to fulfil the requirement for “ Automotive Specification” for the anti-leak tests of the electrolyte (The FORTZA battery can be held upside down for a short amount of time without any leakage;
- » Produced with the newest Lead-Calcium technology
- » Anti-flame protection insures increased security allowing the gases to evacuate without any ignition danger;
- » Absolute free maintenance. FORTZA Batteries do not need any water over their lifetime. The revolutionary technology used insures top performances of the capacity and the start-up current in low temperatures.



Constructive Characteristics

- » Polypropylene-Copolymer Tanks (PPCo) in red color,
- » Ergonomic design “handle for easy handling”
- » Grates for negative and positive plates of lead-calcium alloy, expanded metal
- » Very reduced gauzes and therefore increased energy density with Up to 16%
- » Caps with special stoppers that allow recombination of the gases released during operation
- » Separators of polyethylene type “handbag”

- » Gauge dimensions according to SR EN 60095-2 + A11: 2000;
- » Functional characteristics according to SR-EN 50342-1: 2006, EN 50342-2: 2008
- » Charging indicator: type “ magic eye”

Technical and functional advantages

- » “PbCa Expanded-metal” technology ensures very low water loss, below 1g / AH, guarantees lifetime maintenance free - under normal operating conditions
- » They can be stored in normal conditions, without recharging for a period of minimum 6 months
- » Due to the type-gauge characteristics and excellent parameters FORTZA batteries covers all the necessary powers for auto-vehicles
- » The special grates design insures best performance that creates a long lifetime expectancy 4-5 years
- » Start-up power is superior by up to 30% compared to batteries with low maintenance, due to the redesign and the increased number of plates.

Nr.	Battery Type		Start-up current (-18 C) SR EN	Sizes			Weight with electrolyte (+/- 5%) Kg	Applications on vehicles
	Tens. (V)	Cap.C20 (Ah)		A	L (mm)	I (mm)		
1	12	55	510	207	175	190	13,1	Petrol car 2000 cm3
2	12	65	600	242	175	190	15,3	Petrol car 2500 cm3, Diesel car 1900cm3
3	12	75	680	275	175	190	18,3	Petrol car 4000 cm3, Diesel car 2500cm3
4	12	80	720	275	175	190	18,7	Petrol car 4000 cm3, Diesel car 2500cm3
5	12	100	850	353	175	190	22,75	Petrol car 4200 cm3, Diesel car 3500cm3

3S Suprema

- » Auto Battery – “ Sealed – Maintenance free”
- » 24 months warranty



Technology

The 3S's SUPREMA Battery uses the most recent innovation in the fabrication of Calcium-Calcium technology that insures the best start-up performance in cold conditions and superior power, needed for the last generation vehicles who requires a lot more energy being equipped with a lot of systems and modern gadgets. The cap is double thermo welded and has a recombination labyrinth for every cell. SUPREMA offers maximum protection for electrolyte leakage even if the battery is upside down (**Roll over test**). THE SUPREMA is maintenance free over their entire lifetime.

Constructive Characteristics

- » Polypropylene-Copolymer Tanks (PPCo) in red color,
- » The cap is double thermo welded and has a recombination labyrinth for every cell
- » Large number of plates
- » Ergonomic design “handle for easy handling”
- » Grates for negative and positive plates of lead-calcium alloy, expanded metal
- » Very reduced gauzes and therefore increased energy density with Up to 16%
- » Caps with special stoppers that allow recombination of the gases released during operation
- » Separators of polyethylene type “handbag”
- » Gauge dimensions according to SR EN 60095-2 + A11: 2000;
- » Functional characteristics according to SR-EN 50342-1: 2006, EN 50342-2: 2008
- » Charging indicator: type “ magic eye”

Technical and functional advantages

- » Ideal for auto vehicles with a large number of electrical equipments
- » They can be stored in normal conditions, without recharging for a period of minimum 6 months
- » Due to the type-gauge characteristics and excellent parameters SUPREMA batteries covers all the necessary powers for auto-vehicles
- » “PbCa Expanded-metal” technology ensures very low water loss, below 1g / AH, guarantees lifetime maintenance free - under normal operating conditions
- » The redesign favors exceptional performance which lead to an increased lifetime
- » Start-up power (at -18 ° C) is superior by up to 30% compared to batteries with low maintenance, due to the redesign and the increased number of plates.
- » The expected lifetime is over 5 years

Nr.	Battery Type		Start-up current (-18 C) SR EN	Sizes			Weight with electrolyte (+/- 5%)	Applications on vehicles
	Tens. (V)	Cap.C20 (Ah)		A	L (mm)	I (mm)		
1	12	54	510	207	175	175	12,3	Petrol car 2000 cm3
2	12	55	560	207	175	190	13,4	Petrol car 3000 cm3
3	12	62	600	242	175	175	14.6	Petrol car 3000 cm3, Diesel car 1900cm3
4	12	66	640	242	175	190	15,0	Petrol car 3000 cm3, Diesel car 1900cm3
5	12	75	720	278	175	175	17.1	Petrol car 4000 cm3, Diesel car 2800cm3
6	12	75	750	278	175	190	17.8	Petrol car 4000 cm3, Diesel car 3000cm3
7	12	85	800	315	175	175	19.0	Petrol car 4000 cm3, Diesel car 3200cm3
8	12	100	900	353	175	175	22,2	Petrol car 4200 cm3, Diesel car 3500cm3
9	12	100	920	353	175	190	22,4	Petrol car 4200 cm3, Diesel car 3500cm3

3S Heavy Duty®

- » Auto batteries Electrolyte charged “with low water consumption, no maintenance”
- » 24 months warranty (110 Ah to 240 Ah)
- » Lifetime expectancy 4 years



Technology

Made with special hybrid technology for “heavy duty” , with reinforced groups in special resins, which increases resistance to vibrations and shocks.

Constructive Characteristics

- » Polypropylene-Copolymer Tanks (PPCo) in red color,
- » Large number of plates
- » Ergonomic design “handle for easy handling”
- » Grates for negative plates of lead-calcium alloy
- » Very reduced gauzes and therefore increased energy density with Up to 30%
- » Caps with special stoppers that allow recombination of the gases released during operation
- » Separators of polyethylene type “handbag”
- » Gauge dimensions according to SR EN 60095-2 + A11: 2000;
- » Functional characteristics according to SR-EN 50342-1: 2006, EN 50342-2: 2008
- » Charging indicator: type “ magic eye”

Technical and functional advantages

- » The Heavy-duty construction insures an optimal operation function in vibration and shocks condition on trucks
- » They can be stored in normal conditions, without recharging for a period of minimum 3 months
- » HEAVY-DUTY covers all the range of tractors, busses, trucks etc.
- » The hybrid technology ensures very low water loss, below 4g / AH, guarantees lifetime maintenance free - under normal operating conditions
- » The special design of the grates insures exceptional performance
- » Start-up power (at -18 ° C) is superior by up to 50% compared to batteries with maintenance.

Nr.	Battery Type		Start-up current (-18 C) SR EN	Sizes			Weight with electrolyte (+/- 5%) Kg	Applications on vehicles
	Tens. (V)	Cap.C20 (Ah)		A	L (mm)	I (mm)		
1	12	110	720	344	172	234	26.8	Motor vehicles, trucks, tractors
2	12	110	760	514	175	210	33.0	Motor vehicles, trucks, tractors
3	12	120	850	344	172	284	32.5	Motor vehicles, trucks, tractors
4	12	135	900	514	175	223	36.9	Motor vehicles, trucks, tractors
5	12	150	1000	513	223	210	42.2	Motor vehicles, trucks, tractors
6	12	180	1200	510	218	223	46.9	Trucks, buses, coaches
7	12	200	1250	507	224	218	48.3	Trucks, buses, coaches
8	12	225	1400	518	273	237	61.0	Trucks, buses, coaches
9	12	240	1300	513	274	242	63.5	Trucks, buses, coaches

3S Super Heavy Duty®

- » Auto batteries Electrolyte charged “with low water consumption, no maintenance”
- » 24 months warranty
- » Lifetime expectancy 4 – 5 years



Technology

The batteries in the auto Super Heavy Duty series use flame separators with glass fiber “glass-mat” combined with reinforced special plates.

Due to this type of separators the lifetime in cycles is bigger and the resistance to vibration is increased over the normal type batteries. The vibration test conformable to SR EN 50342 is made on an acceleration of 6g’s for a duration of 20h compared to classic batteries which are tested at 3g’s for 3 hours.

The Super Heavy duty batteries offers extra performance in extreme weather and road conditions.

Constructive Carachteristics

- » Extra resistance to vibrations and shocks
- » Thick plates especially designed for maximum resistance over corrosion
- » The SUPER HEABY DUTY BATERIES are specially designed for heavy vehicles such as pick-ups, trucks, lorries and buses etc.
- » Durable plates for heavy uses with special interior design
- » Polypropylene-Copolymer Tanks (PPCo), easy handle
- » Charging indicator: type “ magic eye”
- » Very reduced gauzes and therefore increased energy density with Up to 30%

- » Caps with special stoppers that allow recombination of the gases released during operation
- » Gauge dimensions according to SR EN 60095-2 + A11: 2000;
- » Functional characteristics according to SR-EN 50342-1: 2006, EN 50342-2: 2008
- » Grates for plates made out of lead-calcium alloy and Separators of polyethylene type “hand-bag” coupled with flame resistant glass fiber separators

Offered Advantages

- » Maximum resistance over corrosion
- » Increased lifetime in cycles
- » High performance
- » No maintance due to increased volume of electrolyte and special alloys
- » Reduced water consumption (1g/Ah – TS EN 50342-1)
- » Resistance to shocks and vibration
- » Increased start-up power in any conditions
- » Durable terminals
- » Deep cycles
- » Maximum performance with special armed separators with fibers

Nr.	Battery Type		Start-up current (-18 C) SR EN	Sizes			Weight with electrolyte (+/- 5%) Kg	Applications on vehicles
	Tens. (V)	Cap.C20 (Ah)		A	L (mm)	I (mm)		
1	12	150	1000	513	223	223	44,0	Motor vehicles, trucks, tractors
2	12	180	1150	513	223	223	47,1	Trucks, buses, coaches
3	12	225	1300	517	275	237	60,8	Trucks, buses, coaches

3S Magic Truck SMF ®



- » Auto batteries Electrolyte charged “with low water consumption, no maintenance”
- » 24 months warranty (110 Ah to 240 Ah)
- » Lifetime expectancy 4 years

Special stoppers and two lids that insures recombination of the oxygen and hydrogen emitted over the 2 plates. It is so prevented the loss of water and the leakage of electrolyte. The positive electrode incorporates silver, tin and calcium alloys (PbCaAg), while the negative electrode incorporates Calcium (Pb-Ca) insuring the minimum loss of water.

Technology

- » Special lid insures 100% seal
- » Charging level indicator mounted on the lid : type “ magic eye
- » Alloy plates Ca-Ca with silver and tin (PbCaAg-PbCa)
- » Big electrolyte reserve over the plates
- » Robust and thicker construction inside the terminals
- » Special stoppers with labyrinth
- » Completely seals double seal lids : patented design
- » Flame “arrestor” mounted inside the lid for insuring protection against sparks and fire
- » Special handle
- » Degasification in two places insures a safety discharge of the gases produced by the battery, without any explosion risk

Detailing technology

- » Thick plates especially conceived for better resistance against corrosion. The positive electrode incorporates silver and the negative one has calcium, thus insuring a minimum water loss
- » Specially conceived for leakage prevention over hard terrain and vibration and for the condensation of water evaporated in high temperatures
- » The block of the battery was modified to increase the electrolyte volume, reducing any effect of corrosion
- » Increasing the electrolyte reserve insures a better performance of the battery in high temperatures
- » The thicker construction inside the terminals increases mechanical resistance and reduces the negative effects of vibration

Advantages

- » Ready to use , completely without maintenance
- » Extra resistance to vibration
- » Increased lifetime in cycles
- » Low water consumption (1g/Ah – TS EN 50342-1)

Nr.	Battery Type		Start-up current (-18 C) SR EN	Sizes			Weight with electrolyte (+/- 5%)	Applications on vehicles
	Tens. (V)	Cap.C20 (Ah)		A	L (mm)	I (mm)		
1	12	150	1000	513	223	223	37.8	Trucks and articulated trucks; Distribution vehicles; Buses and coaches; Vehicles used for public services; Construction machinery; Agricultural vehicles.
2	12	180	1200	513	223	223	40.9	
3	12	225	1300	517	275	242	54.0	

3S To Pumps - 3S2P

The Complete Efficient Solar Water Pumping System

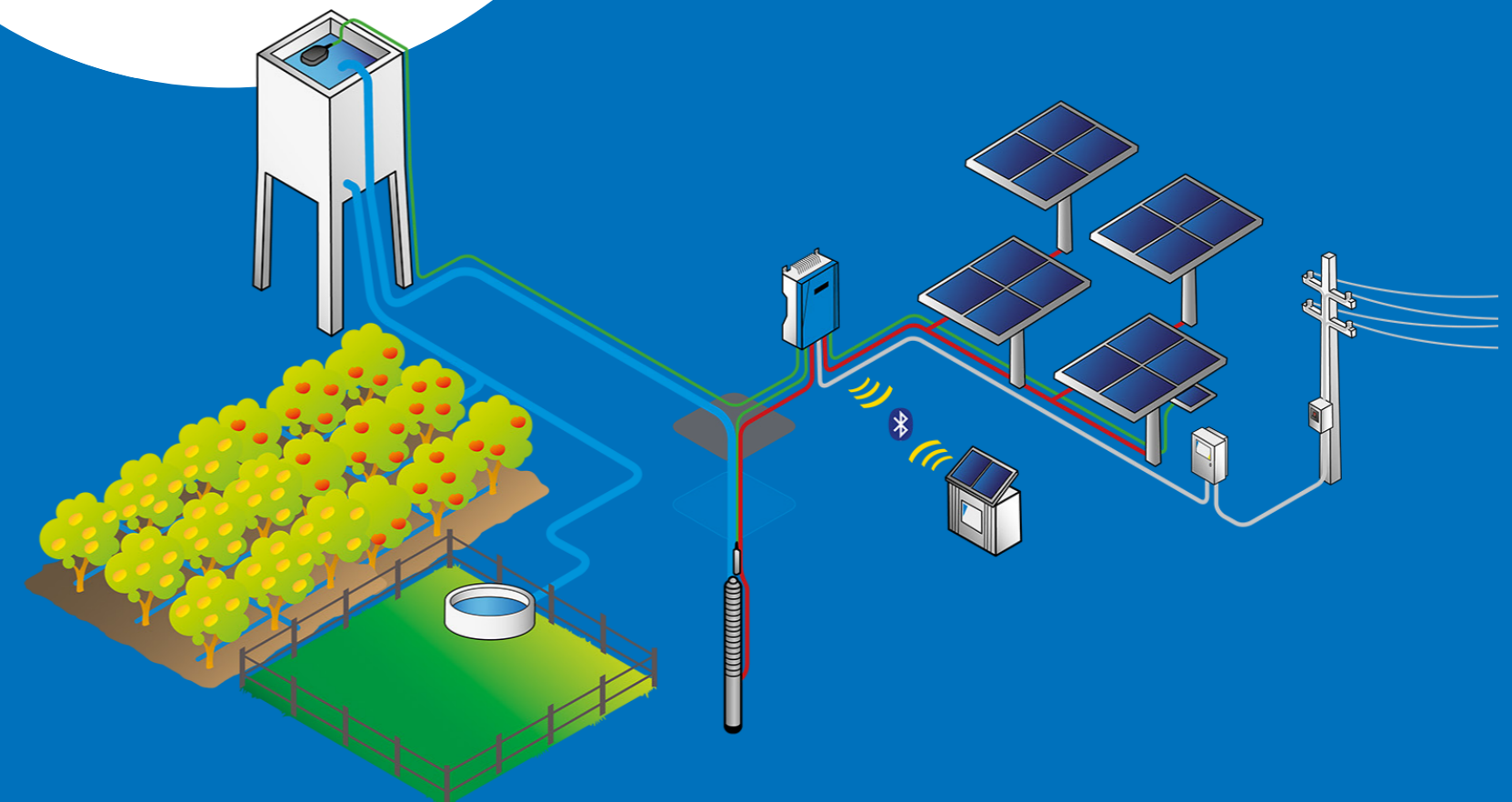
Pumping water uses a significant amount of power. The sun provides us with an almost infinite energy source that, with the right planning and equipment, means we can pump water anywhere without the need for power infrastructure.

3S2P is an advanced solar water pumping system. The system is designed specifically to use the power of the sun to move water, so replacing the need for grid power or diesel.

As solar power is not consistent through the day then 3S2P constantly changes the pump parameters to optimize the amount of water available.

3S2P systems are the most efficient available, delivering 30% to over 1,000% more water than the competitors' products depending on weather conditions.

3S2P covers a wide power range from 150W to 4kW with a wide range of pumps for submersible, surface or swimming pool applications.



Designed for Solar Water Pumping

3S2P has been designed from the first white board sketches to be a solar pumping system. The system has been designed and built by an engineering team who only focus on solar water pumping. This experience means they design, test and build systems where operation in the harshest, most remote environments is normal.

3S2P is designed to be field serviceable, the pump unit components and electronics are modular to allow for cost effective and fast replacement.

PS3S

The Complete Solar Water Pumping System with Smart-

PS3S is the latest generation of solar water pumping systems for larger projects. PS3S can operate exclusively on solar power or with our new SmartSolution. PS3S SmartSolution provides a true hybrid pumping system which automatically can blend grid power and generator power with the core solar power supply.

PS3S is an advanced solar water pumping system. The system is designed specifically to use the power of the sun to move water, so replacing the need for grid power or diesel.

As solar power is not consistent through the day then PS3S constantly changes the pump parameters to optimize the amount of water available.

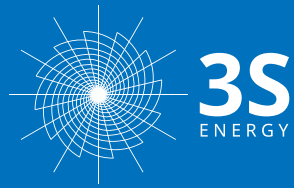
Being designed as an off-grid solar water pumping system, PS3S has all of the inputs and outputs needed in an integrated self-managing system.

Where water demands cannot be met by solar power alone the hybrid PS3S SmartSolution seamlessly blends in external power sources on demand.



With PS3S anything is possible

PS3S systems are available from 7kW to 40kW with a wide range of submersible and surface pumps and motors.



STRATEGIC SOURCING SOLUTION LTD

Company No. 2142536



30/F JARDINE HSE ONE CONNAUGHT
PLACE CENTRAL - HK



office@3s.energy